

# KILL GERMS INSTANTLY

## Automatic and Manual Dispensers For Hand Sanitizer

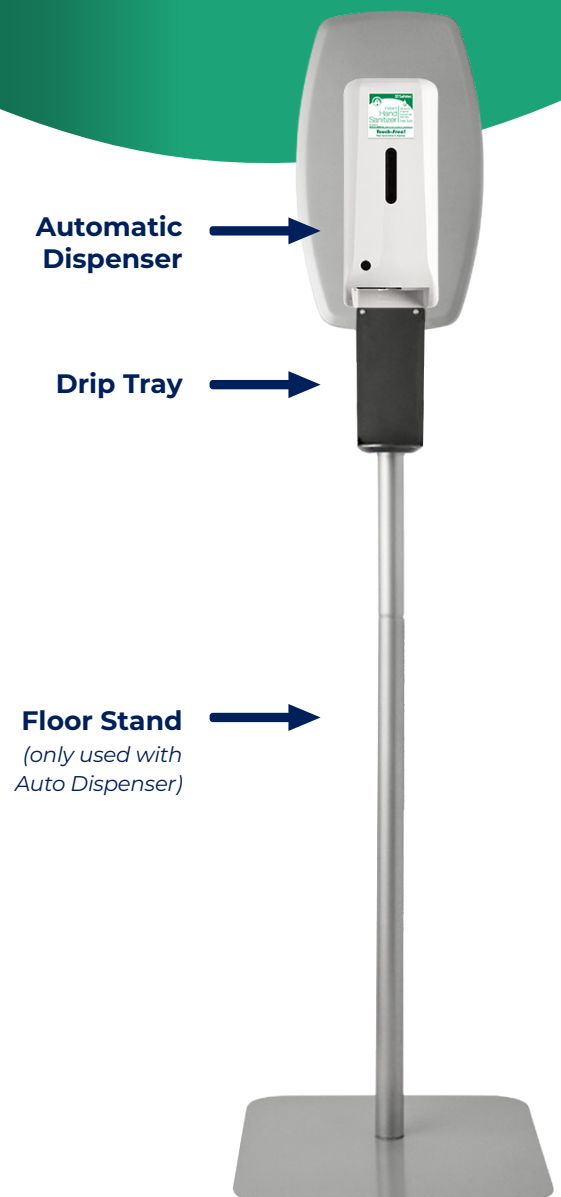
Safetec offers an Automatic and Manual Dispenser for Instant Hand Sanitizer. The Automatic Dispenser also has a floor stand option that is easy to place and move around in any facility where hand sanitizer is needed.



**Manual Dispenser**  
2510037



**Automatic Dispenser**  
27508



**Automatic Dispenser**

**Drip Tray**

**Floor Stand**  
*(only used with Auto Dispenser)*

# Order Information

## ① Choose a Dispenser

### Instant Hand Sanitizer\*

- Kills 99.9% of germs (Contains 66.5% Ethyl Alcohol)
- Formula evaporates completely, leaving no sticky residue on hands
- Aloe vera adds moisture with each use



Manual Dispenser†

Item#	Description	Case Qty.
2510037	Manual Dispenser 800ml	12 /case
27508	Automatic Dispenser 800ml	12 /case



Automatic Dispenser‡

## ② Choose a Refill

Item#	Description	Case Qty.
17360	Fresh Scent 800ml Manual Dispenser Refill	12 /case
17369	Fresh Scent 800ml Auto Dispenser Refill	12 /case



Hand Sanitizer  
Manual Refill  
17360



Hand Sanitizer  
Automatic Refill  
17369

## ③ Add Accessories

### Drip Tray

- Drip Trays can be used on both Automatic and Manual Dispensers
- Adhesive tabs on the back easily adhere to surfaces, as an alternative to using screws.

### Floor Stand (For Automatic Dispensers only)

Item#	Description	Case Qty.
27507	Floor Stand (Auto Dispensers Only)	1 each
2510122	Drip Tray	1 each



Drip Tray  
2510122

Floor Stand  
27507

## Compliance

\*Meets OSHA, APIC and CDC hand washing recommendations in the absence of soap and water

†Meets OSHA and APIC hand washing recommendations

‡Meets ADA operability

# Manual Dispenser Instructions

## ① Mounting Instructions

### Tape Mounting

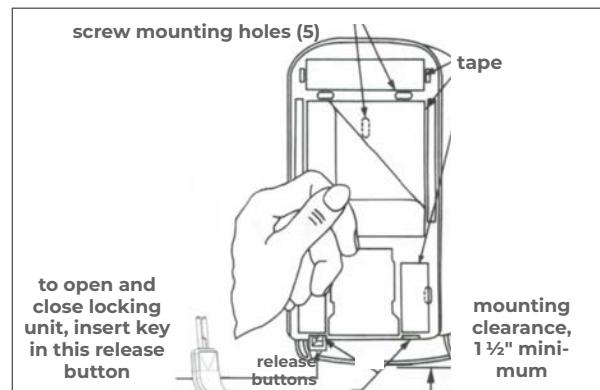
1. Clean the flat surface with towelette and an abrasive cleanser prior to mounting. Dry surface thoroughly. **Only recommended for mirrors or other similar flat surfaces**
2. Remove backing from tape and press firmly against mounting surface for 10 seconds. Open cover and press directly on back plate for additional 10 seconds. **Allow 8 hours before loading unit.**
3. **Opening Instructions:** Push up on two release buttons on each side of base with thumb and forefinger. With other hand, gently pull cover away from wall at top of dispenser.

*(For locking units – insert provided key into key-hole in right-hand release button and press upward; key must remain in keyhole while closing dispenser)*

### Screw Mounting

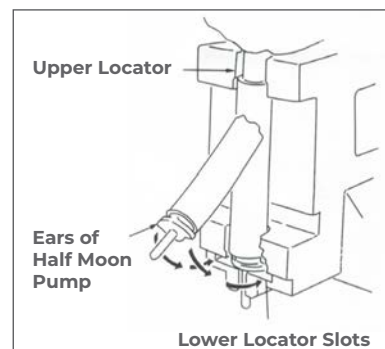
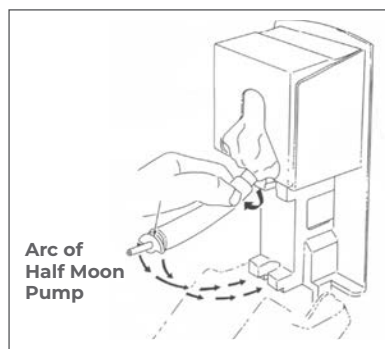
#### Recommended for surfaces that are not ideal for tape mounting

1. Hold dispenser against wall in desired position, open cover and mark screw hole location on wall, insuring screw heads will not interfere with release bar.
2. Use appropriate anchors and drill size for #10 x 1" self-taping screws to attach dispenser firmly to the wall.



## ② Refill Instructions

1. Press finger into perforated area and remove key-hole perforated shaped area.
2. Locate nozzle and pull down through bottom of box.
3. Place cartridge on dispenser platform. Pull nozzle with thumb and forefinger to rotate top of tub so Arc of Half Moon Pump is facing toward you.
4. Place top of tube firmly in neck of upper locator and fit Ears of Half Moon Pump into Lower Locator Slots.
5. Before closing the cover, check to make sure Arc of Half Moon Pump is facing toward you and Ears of Half Moon Pump are firmly seated in slots of lower locator.

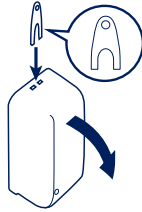


# Automatic Dispenser Instructions (Also available with floor stand option)

## ① Mounting Instructions

### To Open Dispenser

Use provided key to press down at top of front cover where key lock is located. Grab the dispenser cover from the top and pull toward you. Cover is hinged at bottom.



### Tape Mounting

1. **Only recommended for mirrors or other similar flat surfaces.**
2. **Dispenser must be mounted at least 10" above any counter or object surfaces.**
3. Remove backing from tape and press firmly against mounting surface for 10 seconds. Open cover and press directly on back plate for additional 10 seconds.  
**Allow 1 hour before loading unit.**

### Screw Mounting

1. Hold dispenser against wall in desired location, open cover and mark screw hole location on wall.
2. Install provided anchors into drywall and secure dispenser with provided screws.

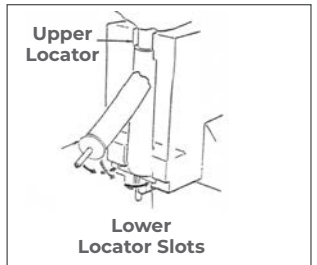
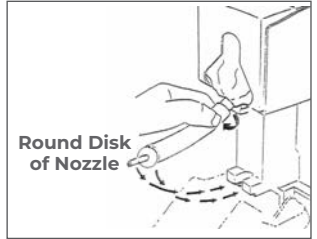
## ② Refill Instructions

### Installing Batteries (batteries not included)

Open dispenser, locate battery compartment on the right side of the dispenser and slide cover forward, away from wall. Place (3) C-cell Alkaline batteries in proper orientation and slide cover back into place.

### Installing Hand Sanitizer Refill

1. Press finger into perforated area and remove key-hole perforated shaped area.
2. Locate nozzle and pull down through bottom of box.
3. Place cartridge on dispenser platform. Pull nozzle with thumb and forefinger, pull round disk of nozzle all the way to bottom of lower locator.
4. Before closing cover, check to make sure round disk of nozzle is firmly in place at bottom of lower locator.
5. After Refill is properly placed, close dispenser cover. LED indicator will blink GREEN/RED 3 times.
6. Place hand underneath dispenser, within 8cm of sensor. LED will blink GREEN and dispense hand sanitizer into hand.

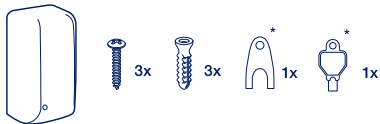


*\*To Reset: Open and close cover*

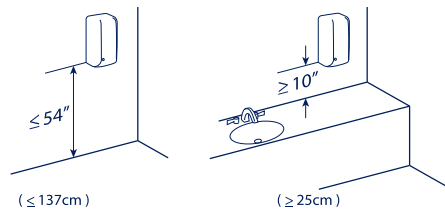
**Sensitivity Adjustment:** If sensor is too sensitive, remove black sticker that is covering Sensor Adjustment screw. Turn screw counterclockwise slightly. (i.e. like a dial on a clock, turn in 15 minute intervals to desired setting)

## Quick Visual Automatic Installation Instructions

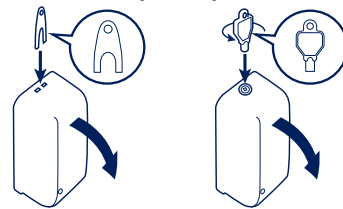
### Recommended Installation Height



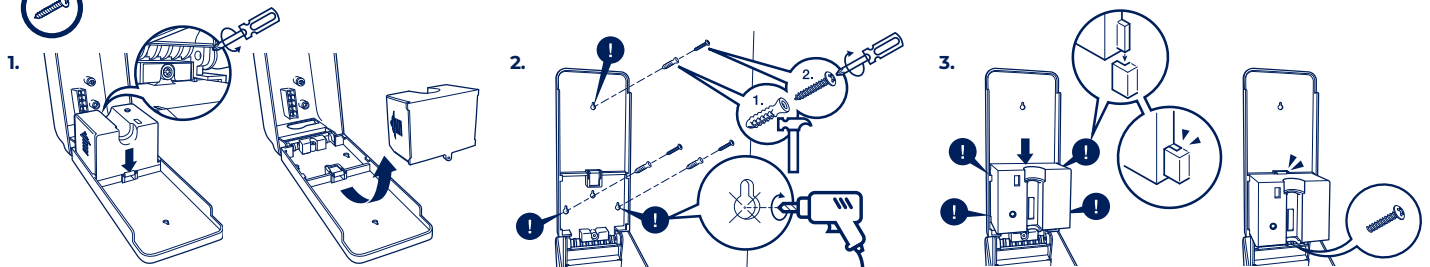
\*may not be included in certain models



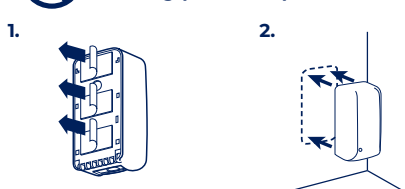
### Open Dispenser



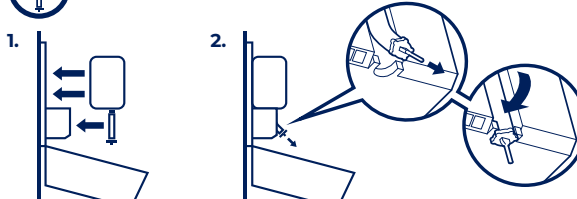
### Installation with Screws



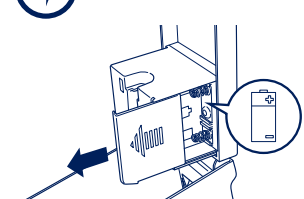
### Installation with Adhesive Backing (no screws)



### Installation Cartridge



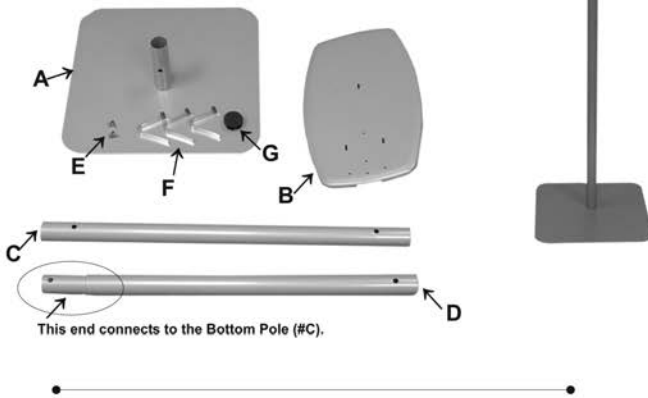
### Install Batteries



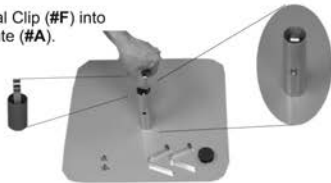
# Floor Stand Instructions

## **Package Include:**

- #A. Base Plate (1)
- B. Face Plate (1)
- C. Bottom Pole (1)
- D. Top Pole (1)
- E. Wing nuts (2)
- F. Metal Clips (3)
- G. Plastic Plug (1)



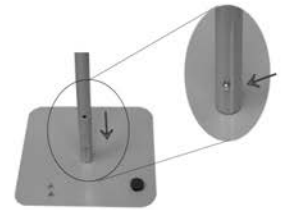
**Step 1:**  
Place a Metal Clip (#F) into the Base Plate (#A).



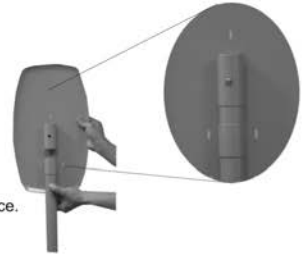
**Step 2:**  
Place a Metal Clip (#F) on each end of the Top Pole (#D).



**Step 3:**  
Slide one end of the Bottom Pole (#D) into the Base Plate (#A). Until the **button** pops into place.



**Step 4:**  
Connect the Top Pole (#D) with the Bottom Pole (#C) by sliding the smaller end of the Top Pole (#D) into the Bottom Pole (#C). Until the button pop into place.



**Step 5:**  
Slide the Face Plate (#B) onto the Top Pole (#D) until the button pops into place.



**Step 6:**  
Place the Plastic Plug (#G) onto the Top Pole (#D) by pushing down until flush.

Mounting holes for dispenser

**Step 7:**  
Mount dispenser by using adhesive tape or affix with Wing Nuts (#E) to the Face Plate (#B).

